



# El Divino

## CHINA

New Bar, Restaurant & Nightclub complex  
Situated at Sheraton - Four Points Hotel, Shenzhen

Spring 2007 - Autumn 2008

Concept planning construction progress document



FOUR  
POINTS  
BY SHERATON



# introduction



In the spring of 2007, El Divino requested Avalon Design to carry out a feasibility study, together with architectural and interior design for a new entertainment and hospitality complex to be built on the sixth floor of the Four Points by Sheraton Hotel, Shenzhen, China.

This document summarises the design planning process with onsite progress photos from concept to construction and completion.

For ease of identification each room has been numbered and named as follows:

- 1: bullion bar
- 2: club room
- 3: divine lounge
- 4: tapas cafe bar
- 5: the terrace



The construction of the hotel is a cast concrete slab to the floors and ceilings and the occasional structural wall. Giant circular columns dominate each room and provide opportunities for design features.

The design intention is to provide for the management the most efficient operation for the venue along with easy circulation for the customers.

Electrical power is available from the hotel distribution point located near room 1.

There is water supply and drainage facilities.

The venue has the benefit of the hotels ventilation and air conditioning although further advice is needed in this respect.



OPEN all day this is a place to meet, greet and have discrete business meetings away from the hustle and bustle of the hotel lobby bar or the everyday office environment



opulent room with splashes of gold and silver creating a feeling of wealth and warmth

surf the internet or use your own laptop for wi-fi access



a unique ying-yang threshold feature framed by four giant columns

secret and sound proofed entrance to the club room

room 1:  
**bullion bar**



**international luxury**



**FOUR  
POINTS**  
BY SHERATON

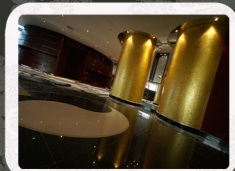
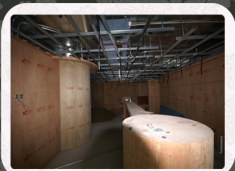


room 1:  
**bullion bar**

Photos illustrate the job in progress and the completed space:



opulence luxury, glowing gold





room 1:

## bullion bar

Photos illustrate the job in progress and the completed space:



polished floors & soft leather



room 2:  
the club



THE DJ is king or queen of this club

set on a pedestal half a meter high and thrust into the centre of the room the dj is surrounded by the loyal congregation of clubbers

vip deck on raised floor with excellent sight lines

large podiums each holding two dancers or more

room designed for easy circulation around perimeter



room 2:

## the club

Photos illustrate the job in progress and the completed space:

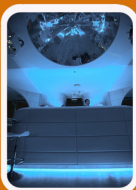


VIP deck, glamour celebrity





pure white, video immersion



room 2:

## the club

Photos illustrate the job in progress and the completed space:



FOUR  
POINTS  
BY SHERATON



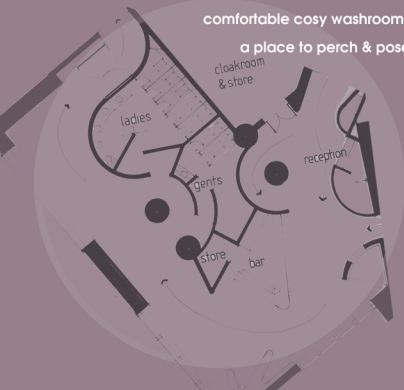
## heavenly hide-away

FEMALE friendly, feminine design

unique curved entrance feature from lifts

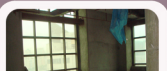
comfortable cosy washrooms

a place to perch & pose



room 3:

## divine lounge



FOUR  
POINTS  
BY SHERATON







perch & pose

room 3:

divine lounge

Photos illustrate the job in progress  
and the completed space:



FOUR  
POINTS  
BY SHERATON

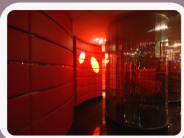




## room 3: divine lounge

Photos illustrate the job in progress  
and the completed space:

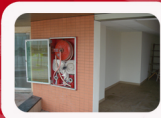
red passion, female friendly



FOUR  
POINTS  
BY SHERATON



TASTE the mediterranean  
cafe style continental dining  
theatrical open kitchen feature



room 4:  
tapas bar



## room 4: tapas bar

Photos illustrate the job in progress and the completed space:

warm & welcoming



room 4:

## tapas bar

Photos illustrate the job in progress and the completed space:



dine in style





EYE CATCHING GIANT tensile fabric roof feature  
a beacon when seen from across the border  
panoramic views of the river and hills of Hong Kong beyond  
roof top landscaped gardens



room 5:  
the terrace



tranquil oasis



FOUR  
POINTS  
BY SHERATON





open space &  
fresh air

## room 5: the terrace

Photos illustrate the job in  
progress and the completed  
space:



FOUR  
POINTS  
BY SHERATON





beautiful view of Hong Kong's new territories

room 5:  
the terrace

Photos illustrate the job in  
progress and the completed  
space:



FOUR  
POINTS  
BY SHERATON

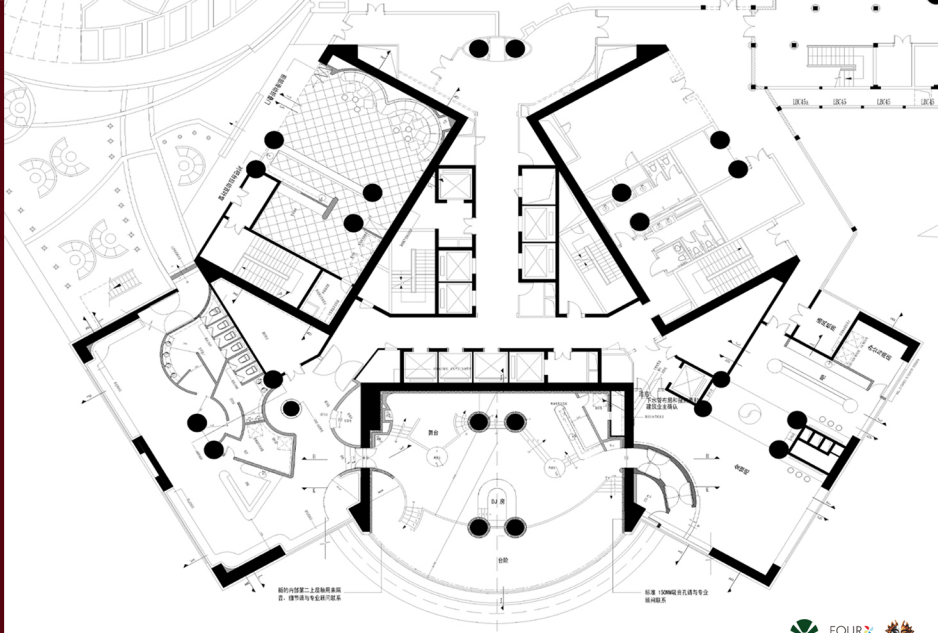


El Divino

## summary:

El Divino Shenzhen is a unique venue of five rooms, from masculine to feminine. Each room has its own character with seamless connections to each other, encouraging visitors to explore.







The visual image is defining today's world.

Video and film influence our ideas, our dreams, our expectations.

Interactive computer programs have added pictures to words to make the accumulation of knowledge entertaining as well as attractive.

In this ever more demanding era, new images and ways to communicate our wants and desires are being discovered every second. It is design that helps us do this; whether it is natural or man made.

The arrangements of line, texture and colour all affect the way we act and react, how we feel and how we perceive our situation. Design influences which shops we enter, the restaurants we frequent, the clothes that we choose to wear to convey our identities; even the streets we chose to travel.

It helps us say that this is what we are and this is what we expect.

Established during the spring of 1990, Avalon Design is a co-operative of designers and technicians skilled within the fields of architecture and interior design.

We have a large portfolio of successfully completed projects that have seen us travel the world from the Far East, Middle East, Europe and South America.

We are involved at every phase of the project from concept to completion. This includes research and development, design concepts, feasibility plans, construction drawings and time on site to commissioning and handover.

Avalon Design is a small virile organisation that does things differently, compared to mainstream organisations; problem solving with simple creative solutions.

‘ALL IN NATURE IS CURVED’



avalon  
architecture & design

135 alcester road  
birmingham  
b13 8jp  
united kingdom

tel: (+44) 0121 246 8777  
fax: (+44) 0121 242 2777  
info@avalondesign.org